



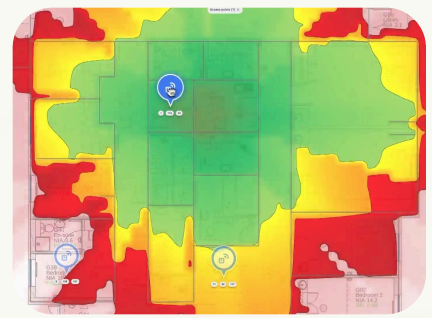
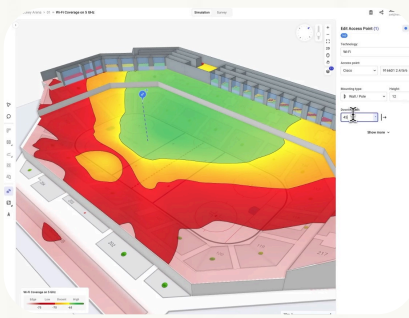
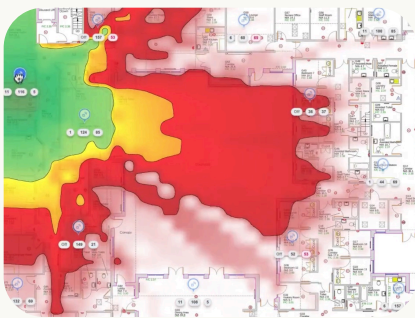
## Bluebird Network Heat Mapping & Facility Mapping

Bluebird's advanced site analysis combines comprehensive Wi-Fi heat mapping and precise LiDAR facility mapping to deliver actionable insights and detailed understanding, optimizing network infrastructure and enhancing spatial management.

### What We Offer

#### Wi-Fi Heat Mapping

- **Comprehensive Coverage Analysis:** Visual mapping of Wi-Fi signal strength, identifying dead zones, interference points, and coverage gaps.
- **Performance Optimization:** Recommendations tailored to enhance signal strength, reliability, and network speed across your facility.
- **Scalability:** Solutions applicable to buildings of all sizes, from small offices to large industrial complexes.



#### Facility Mapping

- **2D Facility Mapping:** Clear, detailed, and accurate floor plans suitable for basic infrastructure planning, maintenance scheduling, and security strategies.
- **3D Facility Mapping (LiDAR):** Immersive high-resolution LiDAR scans providing precise spatial measurements and detailed visualizations, ideal for comprehensive facility management, renovations, and infrastructure upgrades.
- **Rapid Data Collection:** Efficient and minimally invasive scanning processes to quickly capture spatial data without significant operational disruption.
- **Facility Optimization:** Data-driven insights supporting strategic planning for security system installations, infrastructure improvements, and emergency preparedness.





## Ideal for

- Commercial Office Spaces
- Educational Institutions
- Retail Stores
- Manufacturing Plants
- Warehouses and Distribution Centers
- Healthcare Facilities
- Hospitality and Event Venues

## Pricing Options

- Available based on facility square footage.
- Special educational pricing by student headcount for schools.

## Connect

trustbluebird.com  
team@trustbluebird.com  
(800) 601-5963

## Key Benefits

- **Enhanced Network Reliability:** Improved productivity and user satisfaction through consistent connectivity.
- **Cost Efficiency:** Proactively identify and resolve network inefficiencies, reducing downtime and unnecessary hardware investments.
- **Facility Intelligence:** Rich spatial data enabling informed decisions for infrastructure enhancements, security upgrades, and emergency response planning.

## Bluebird Advantage

- **Expert Technicians:** Highly trained in-house professionals ensuring reliable, quality service.
- **Advanced Technology:** State-of-the-art equipment ensuring precise, dependable results.
- **Actionable Reporting:** Clear, insightful deliverables customized to your facility's specific needs, supporting strategic planning and decision-making.